

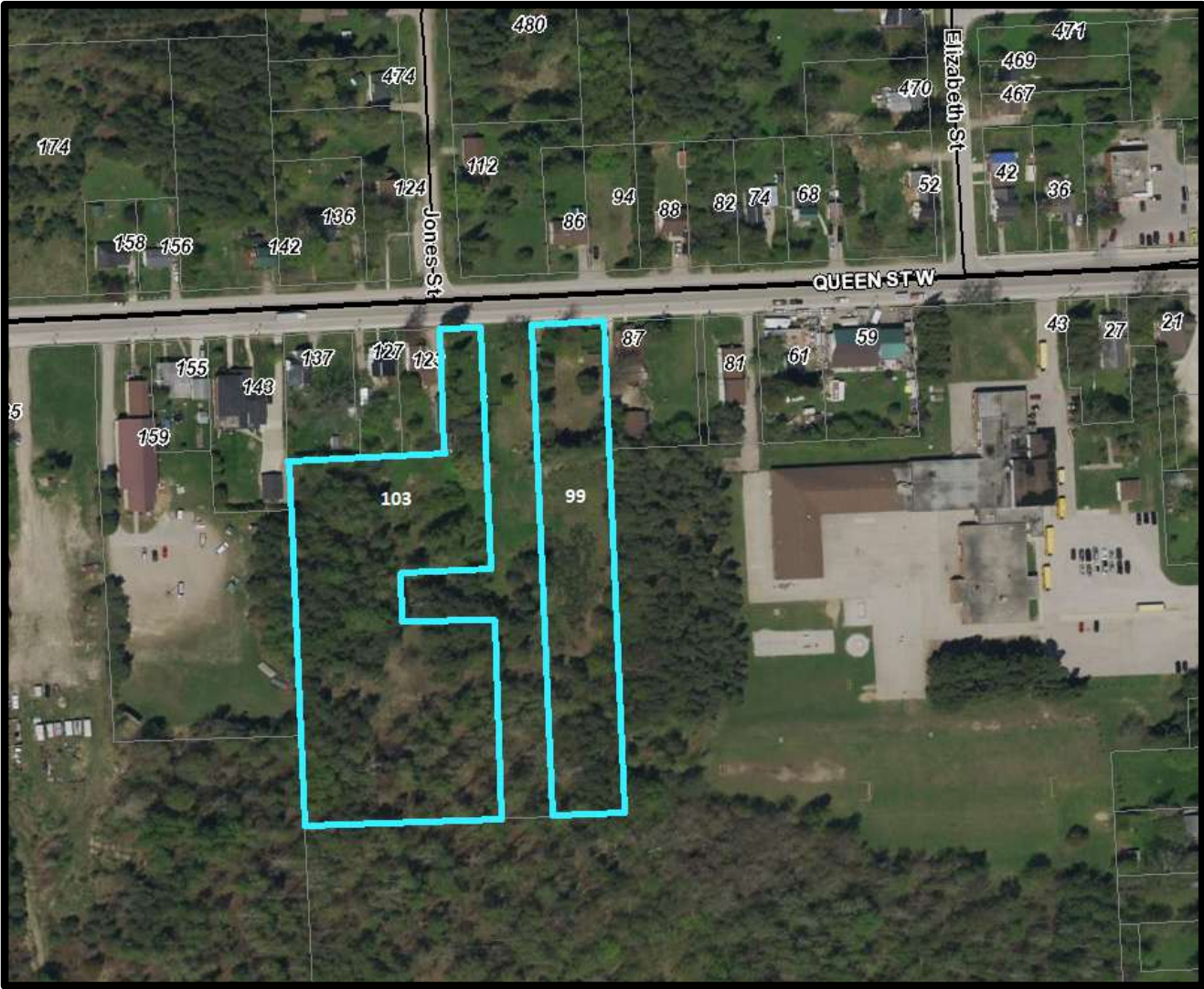
# South Bruce Peninsula Vacant Lots



# Queen Street, Hepworth

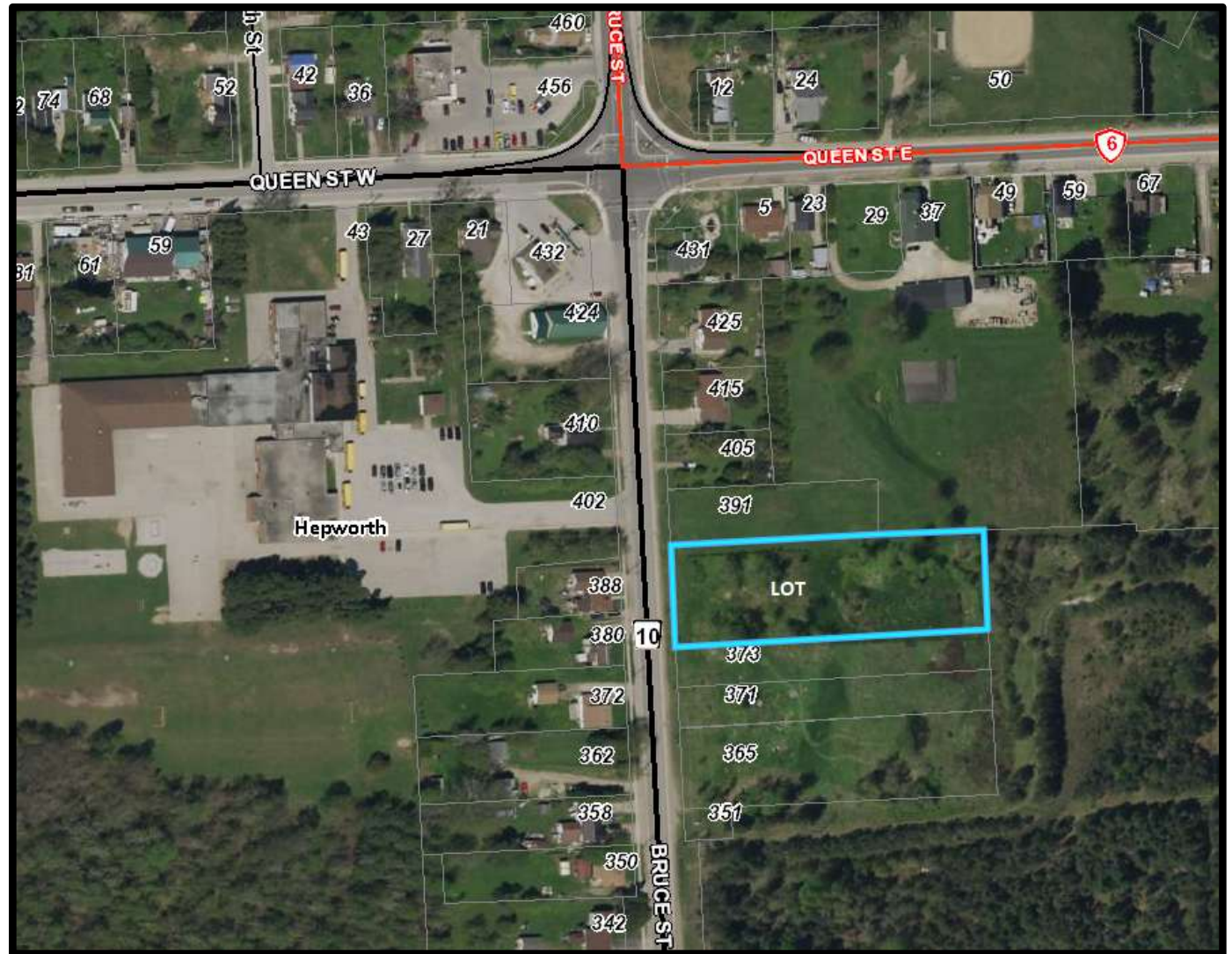
99 Queen Street:  
99' x 651'  
1.48 acres

103 Queen Street:  
60' frontage  
277' x 664'  
4.4 acres



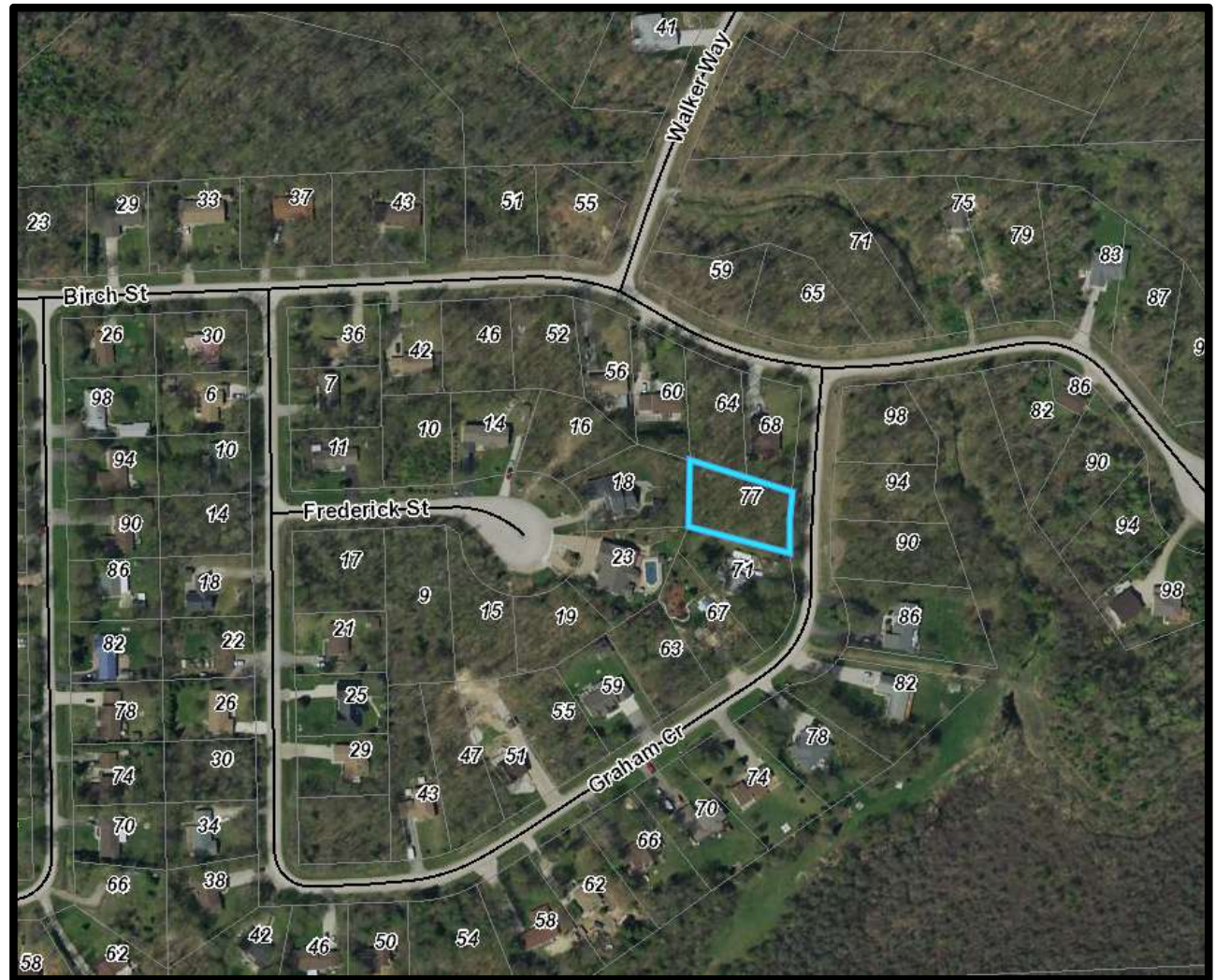
# Bruce Street, Hepworth

Lot 1: 124' x 379'  
1.07 acres



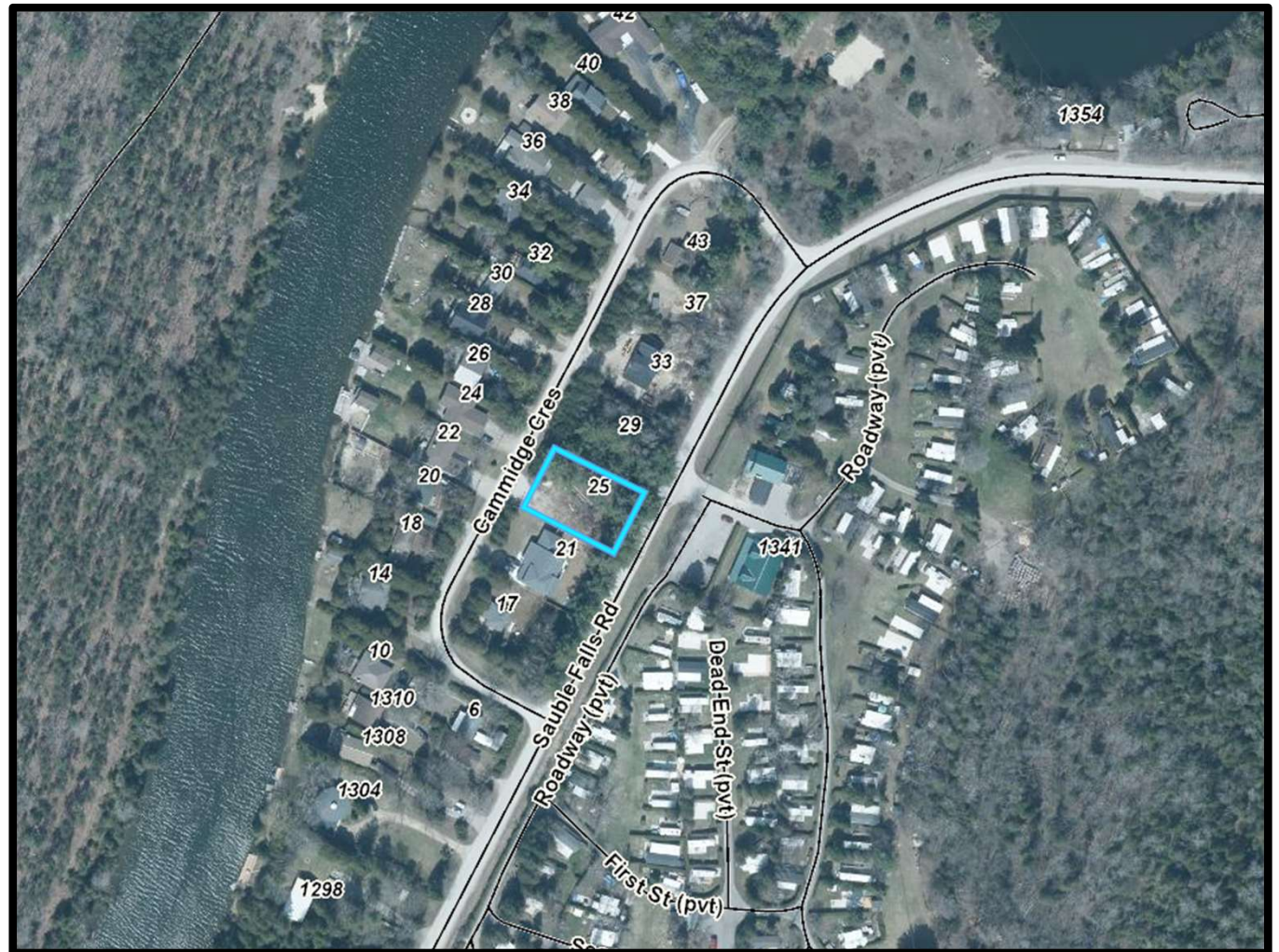
# 77 Graham Crescent, Sauble Beach

77 Graham Crescent:  
108' x 170'



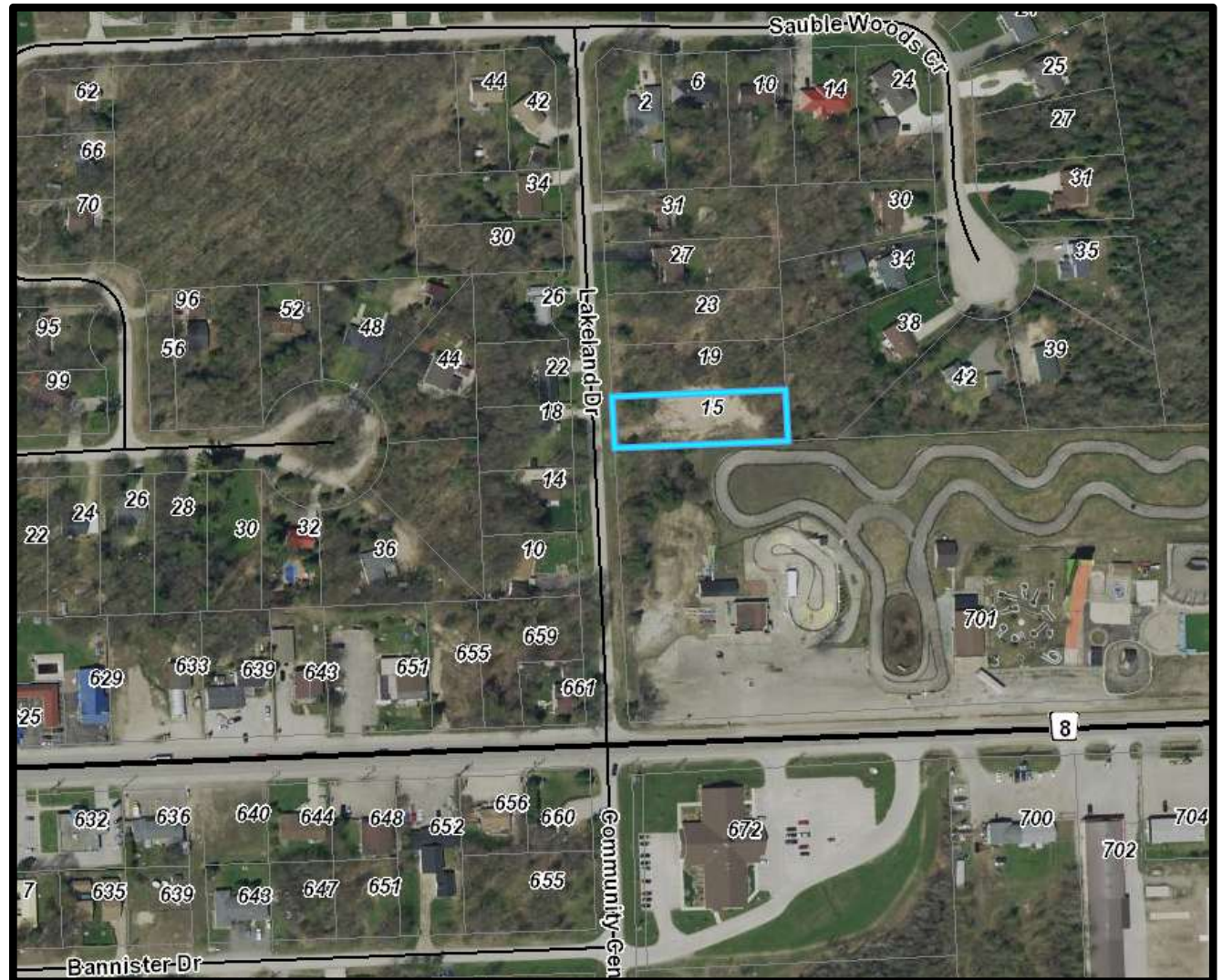
# Cammidge Crescent, Sauble Beach

25 Cammidge Crescent:  
91' x 125'



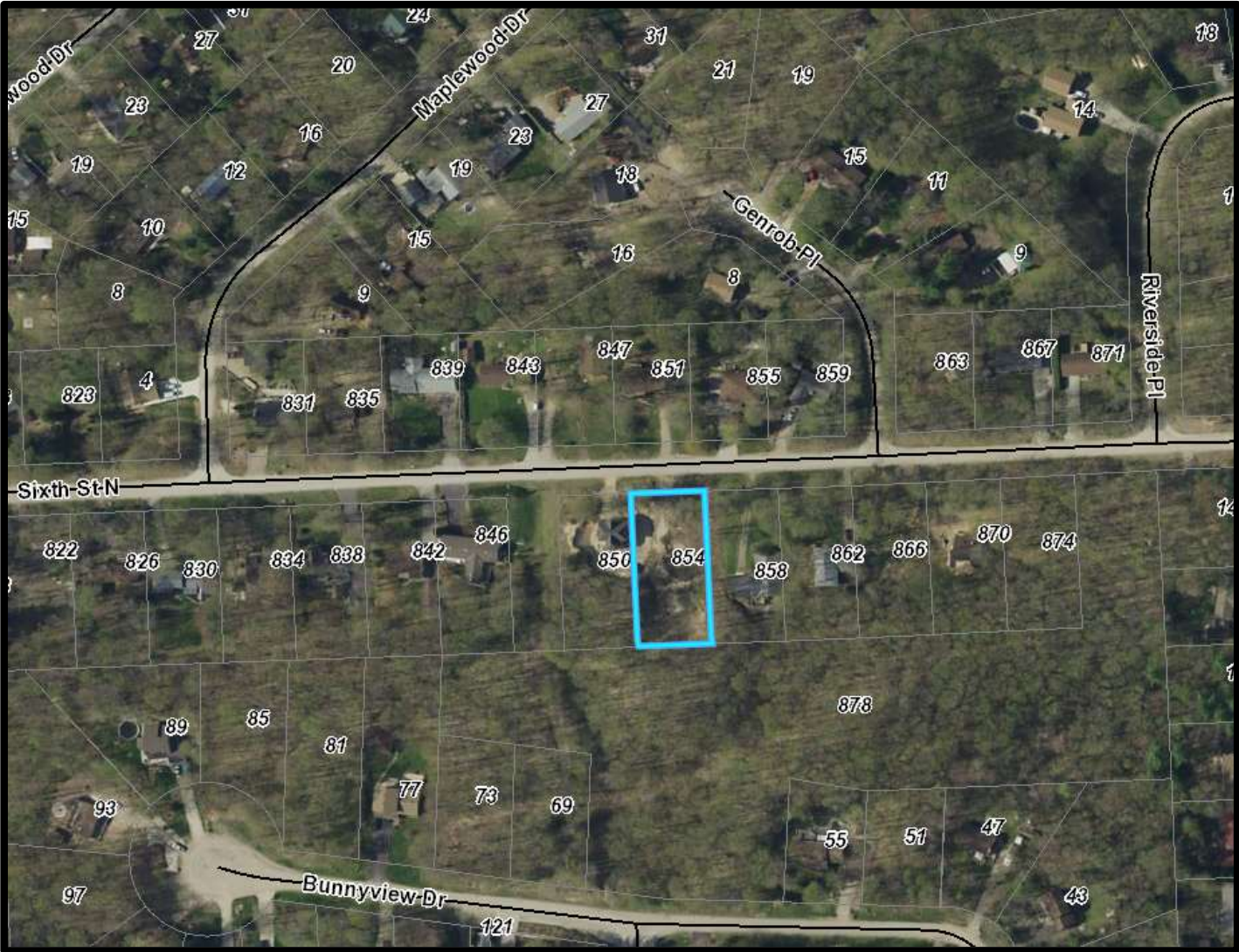
# Lakeland Drive, Sauble Beach

15 Lakeland Drive:  
80' x 270'



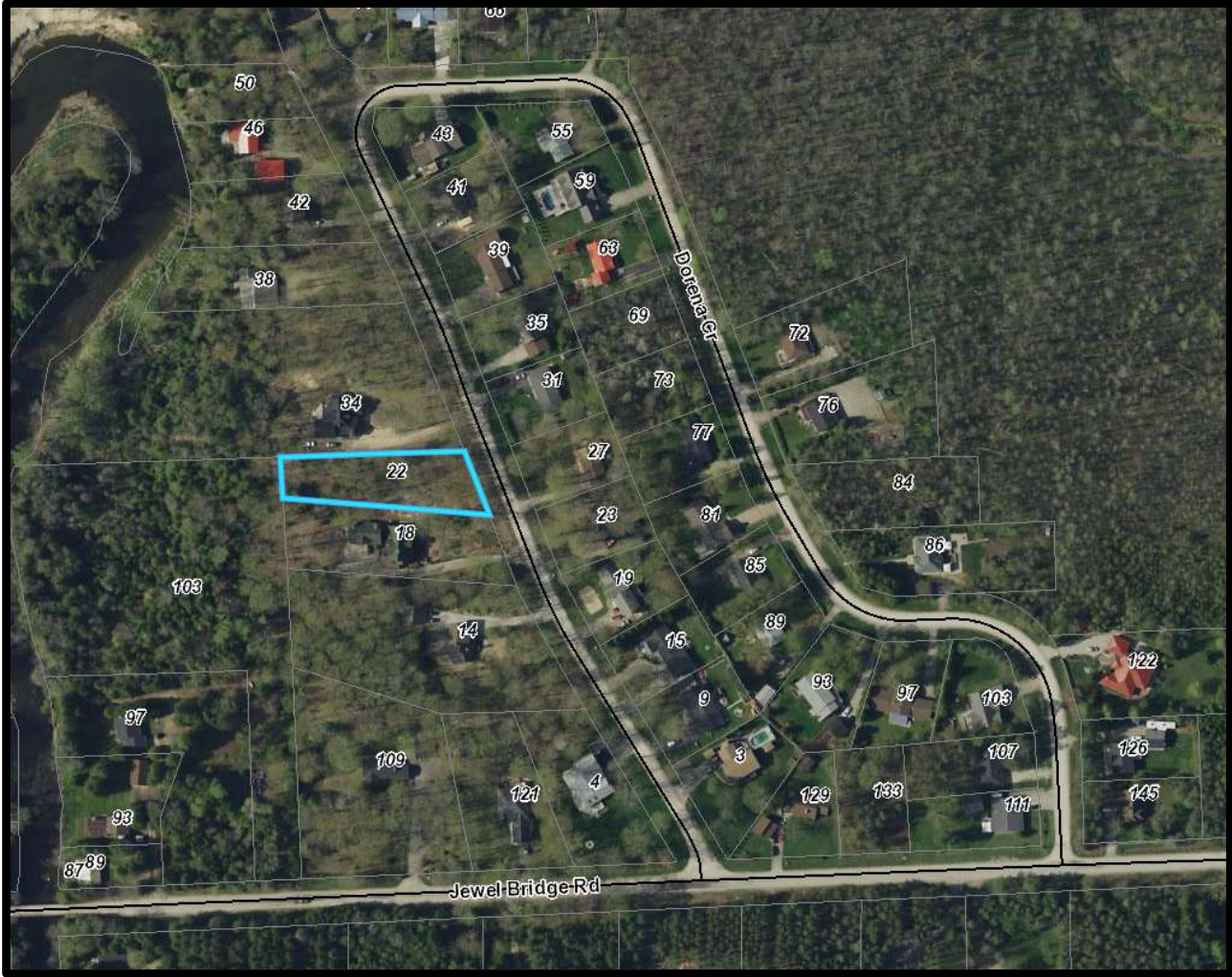
# 854 Sixth Street N, Sauble Beach

854 6<sup>th</sup> Street N:  
95' x 200'



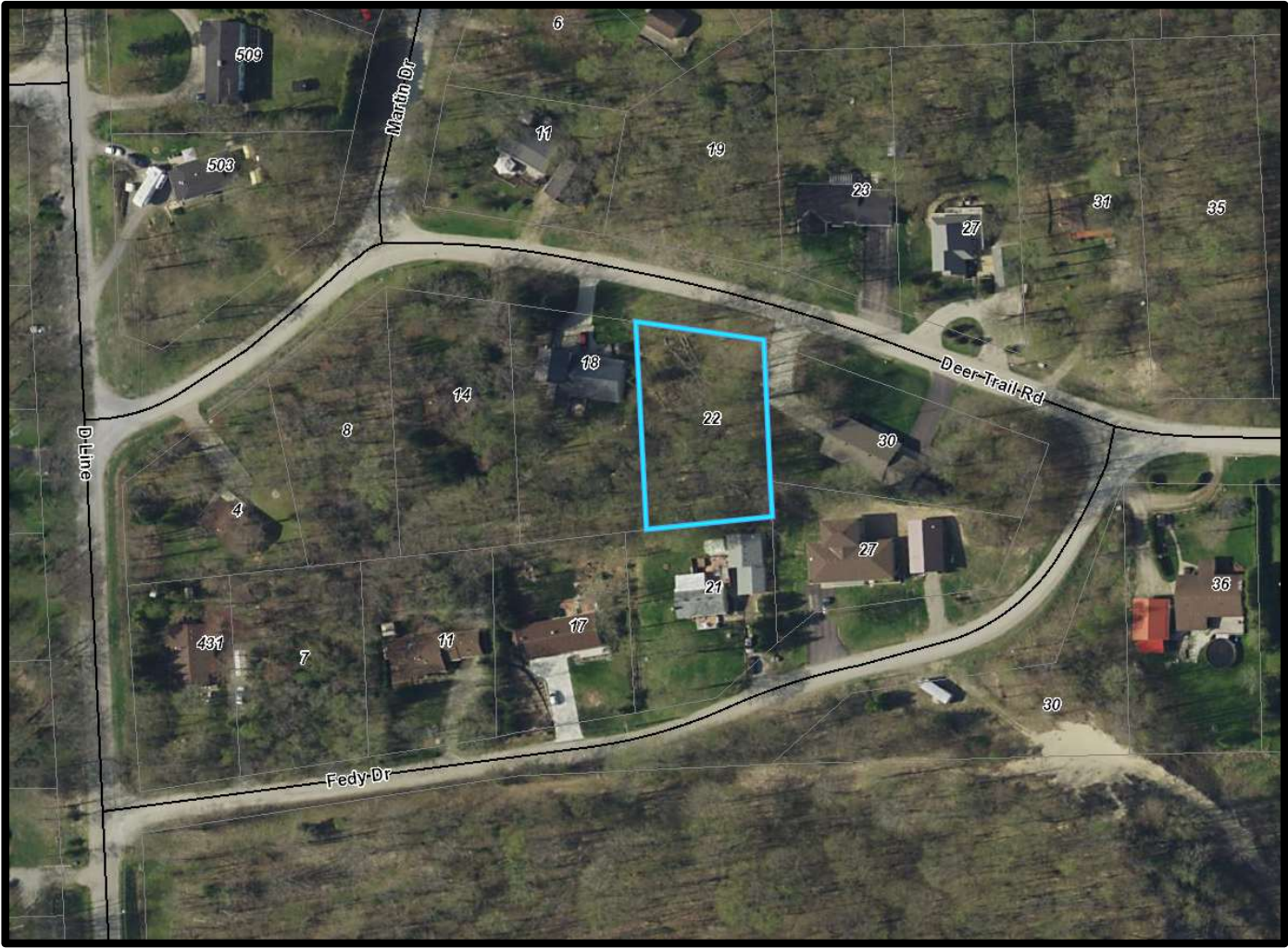
# 22 Dorena Crescent, South Bruce Peninsula

22 Dorena Crescent:  
100' x 305'



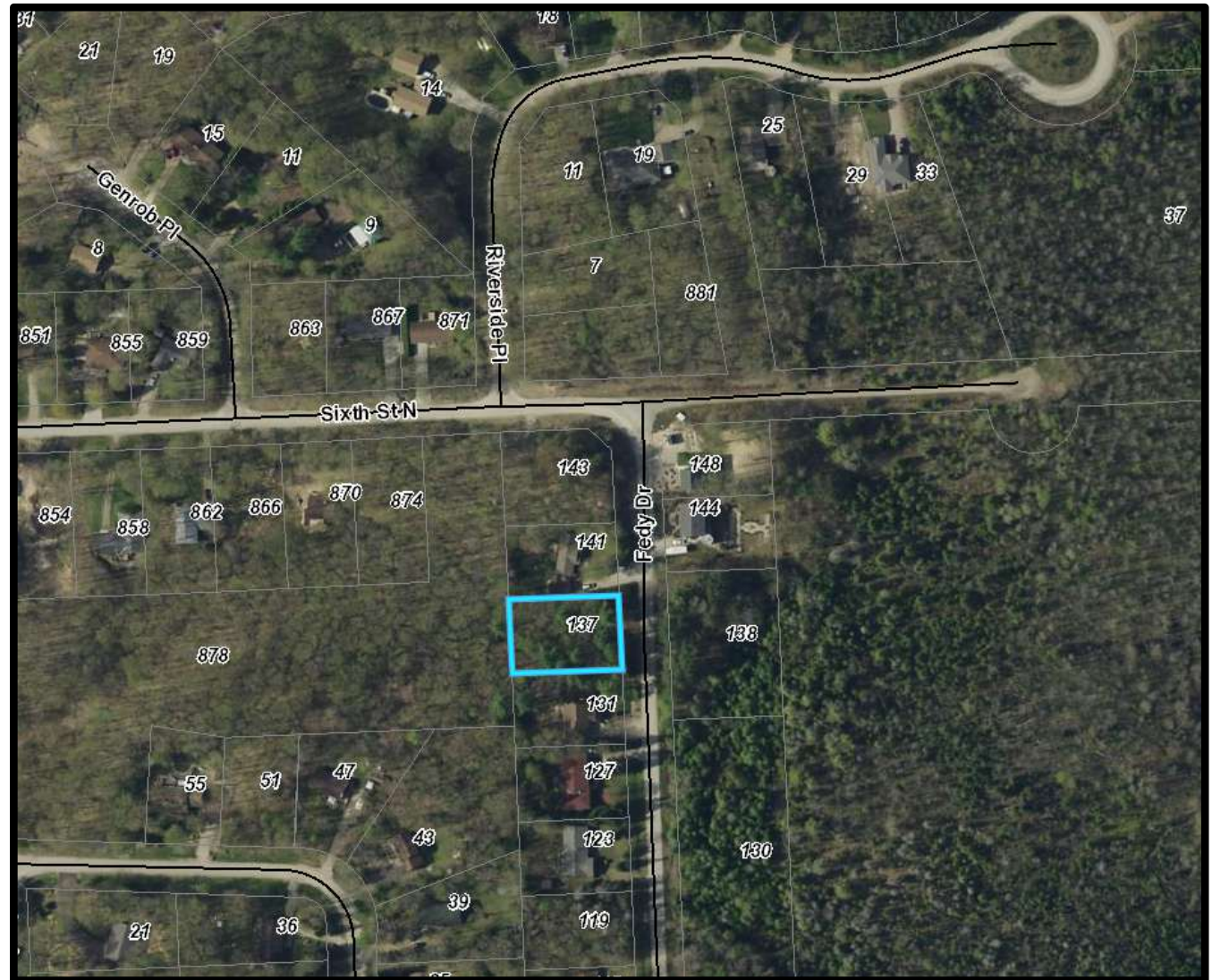
# 22 Deer Trail Road, Sauble Beach

22 Deer Trail Rd:  
100' x 150'



# 137 Fedy Drive, Sauble Beach

137 Fedy Drive:  
100' x 150'



# 26 Beechwood Drive, Oliphant

26 Beechwood Drive:  
123' x 266'



# Islandview Drive, South Bruce Peninsula

Part 2:  
83' x 200'

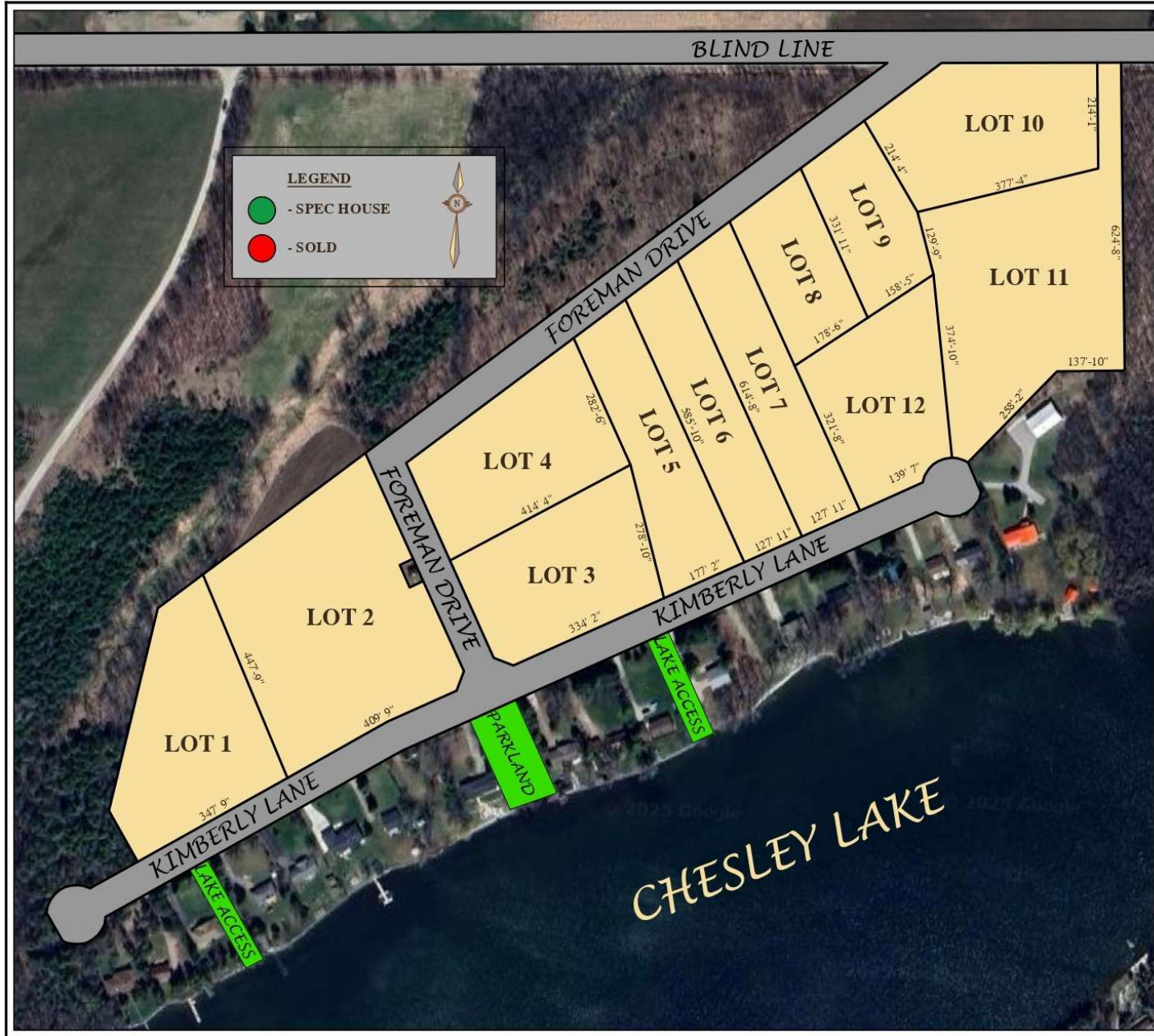
Part 5:  
60' x 182'

Part 7:  
60' x 182'

Part 10:  
66' x 181'



# Chesley Lake, South Bruce Peninsula



# Elsinore Road, South Bruce Peninsula

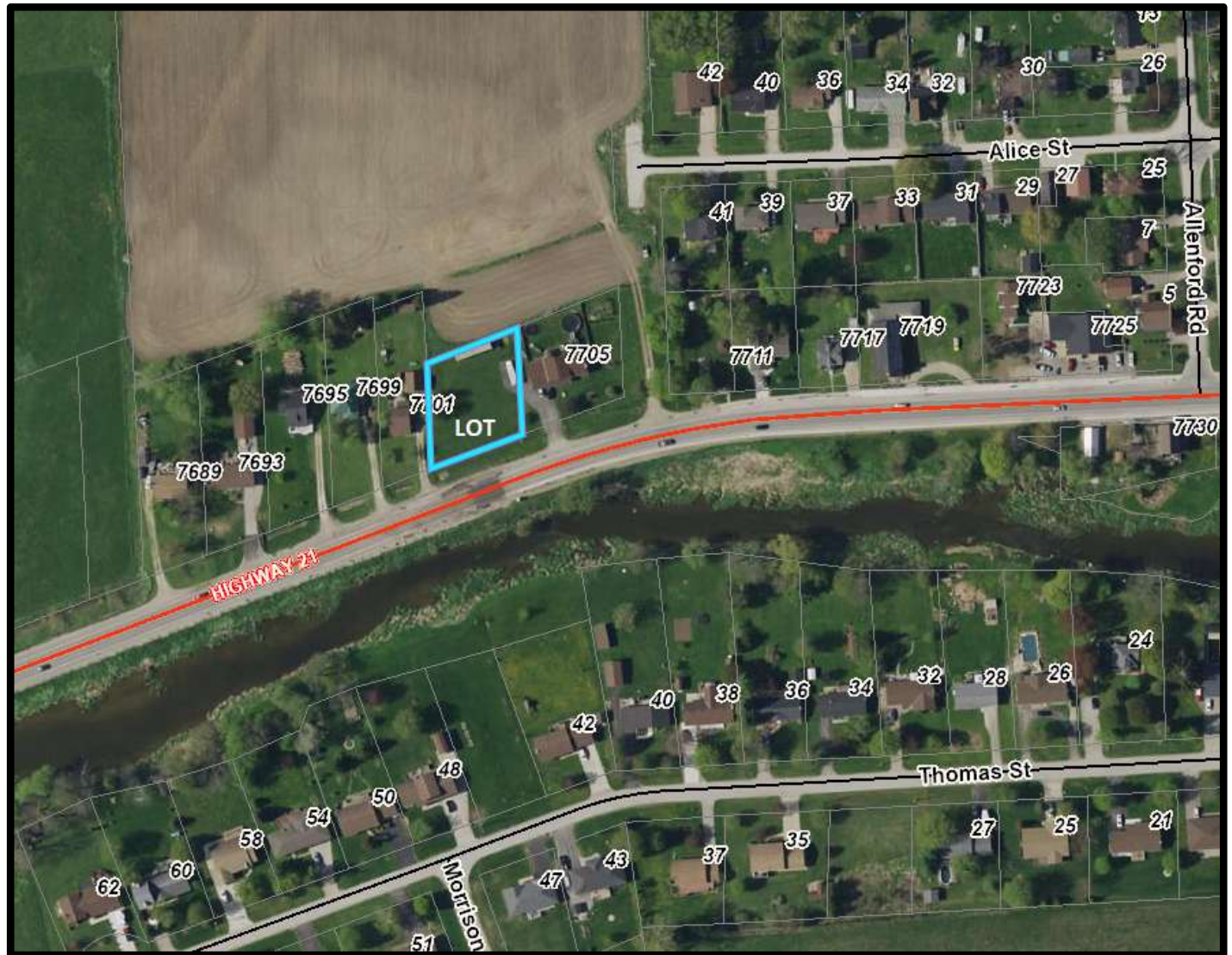
Part 1: 5.16 acres

Part 2: 4.94 acres



# Highway 21, Allenford

Lot: 122' x 132'



# Highway 21, Allenford

Pt Lt 32: 1001' x 1688'  
23 acres

