

Owen Sound Vacant Lots



3rd Avenue East – Semi Lots

Part 1: 32' x 215'

Part 2: 32' x 230'



3rd Avenue West

Lot 45: 66' x 165'



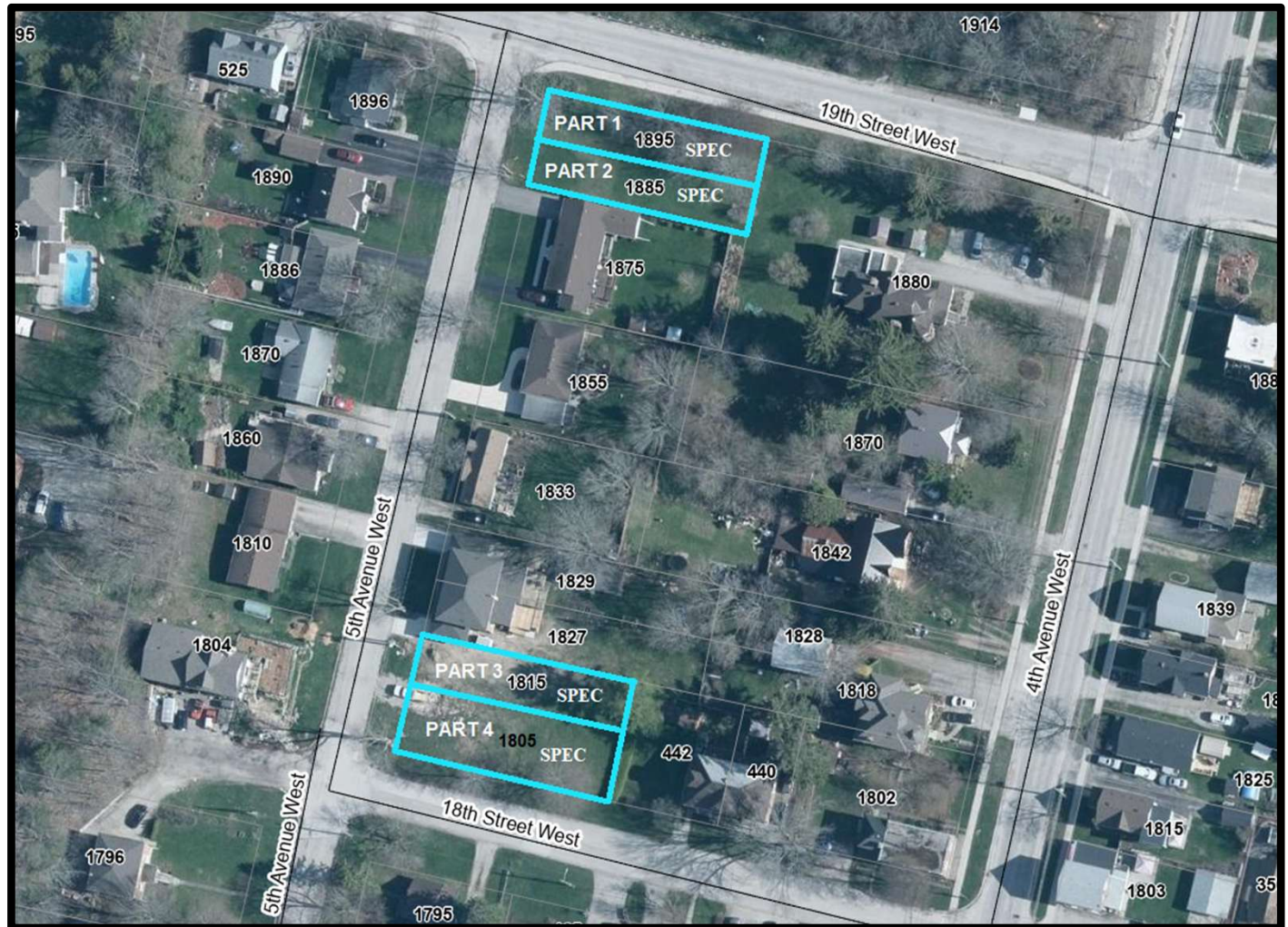
5th Avenue West – Spec Semi Lots

Part 1: 31' x 120'

Part 2: 29' x 120'

Part 3: 30' x 129'

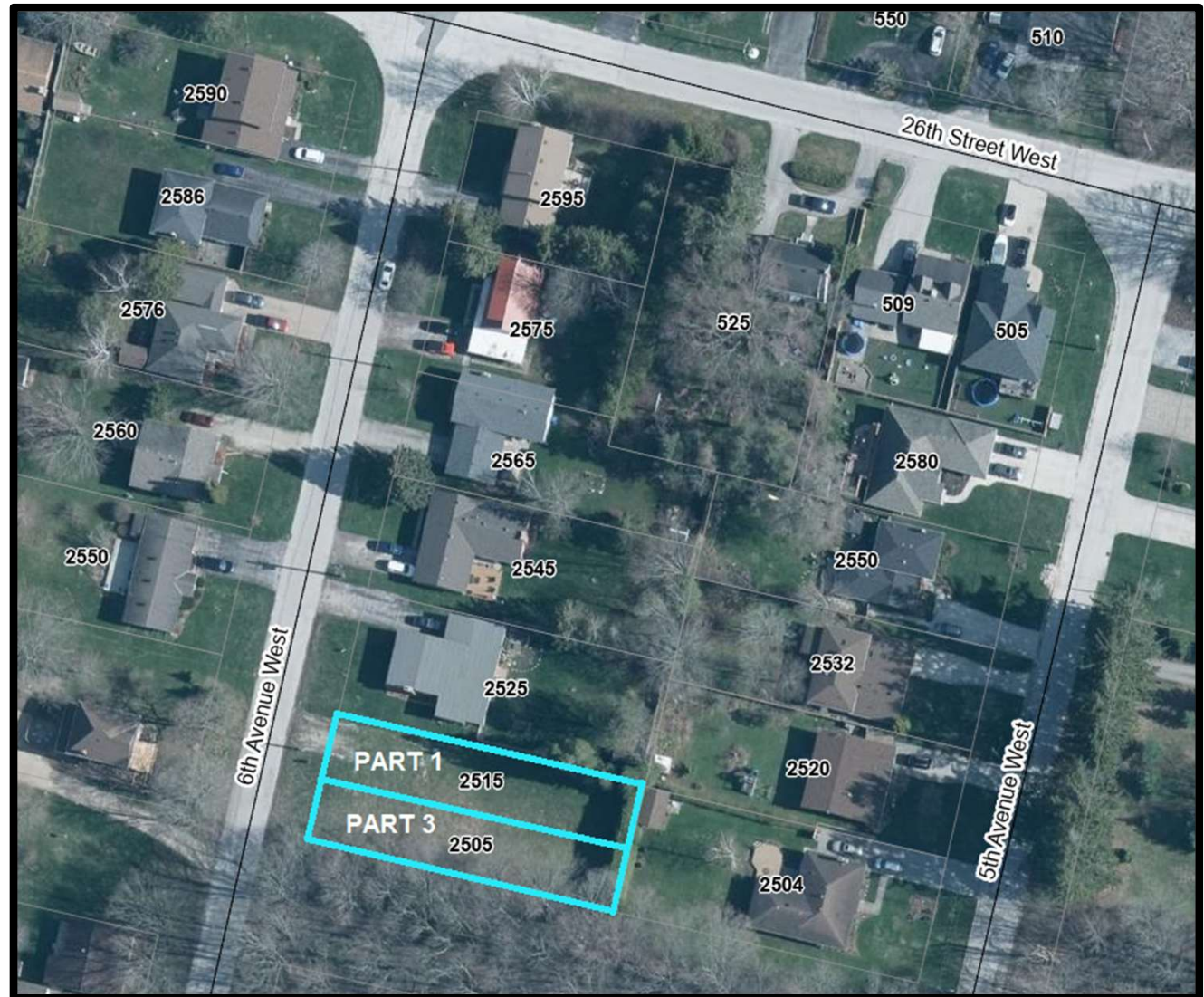
Part 4: 36' x 129'



6th Avenue West – Semi Lots

Part 1 – 34' x 165'

Part 3 – 33' x 165'



7th Avenue East

Lot: 42' x 112'

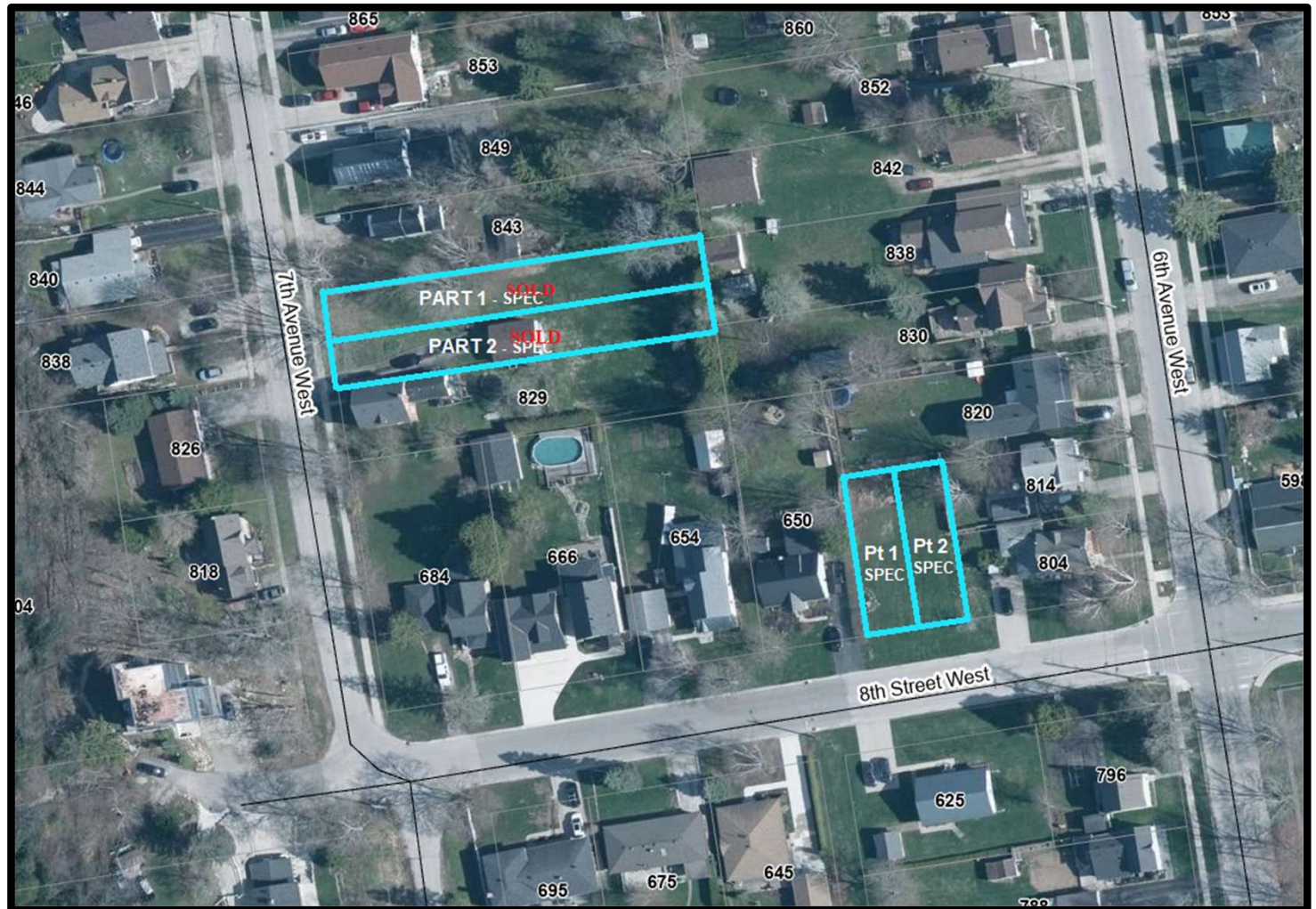


7th Avenue W & 8th Street W – Spec Semi's

8th St W

Pt 1: 30' x 99'

Pt 2: 30' x 99'



10 Street 'A' West

Lot: 40' x 127'



8th Avenue East - Ridgcrest

Lot 1: 41' x 263'

Lot 2: 41' x 263'

Lot 3: 41' x 263'

Lot 4: 41' x 263'

Lot 5: 41' x 263'

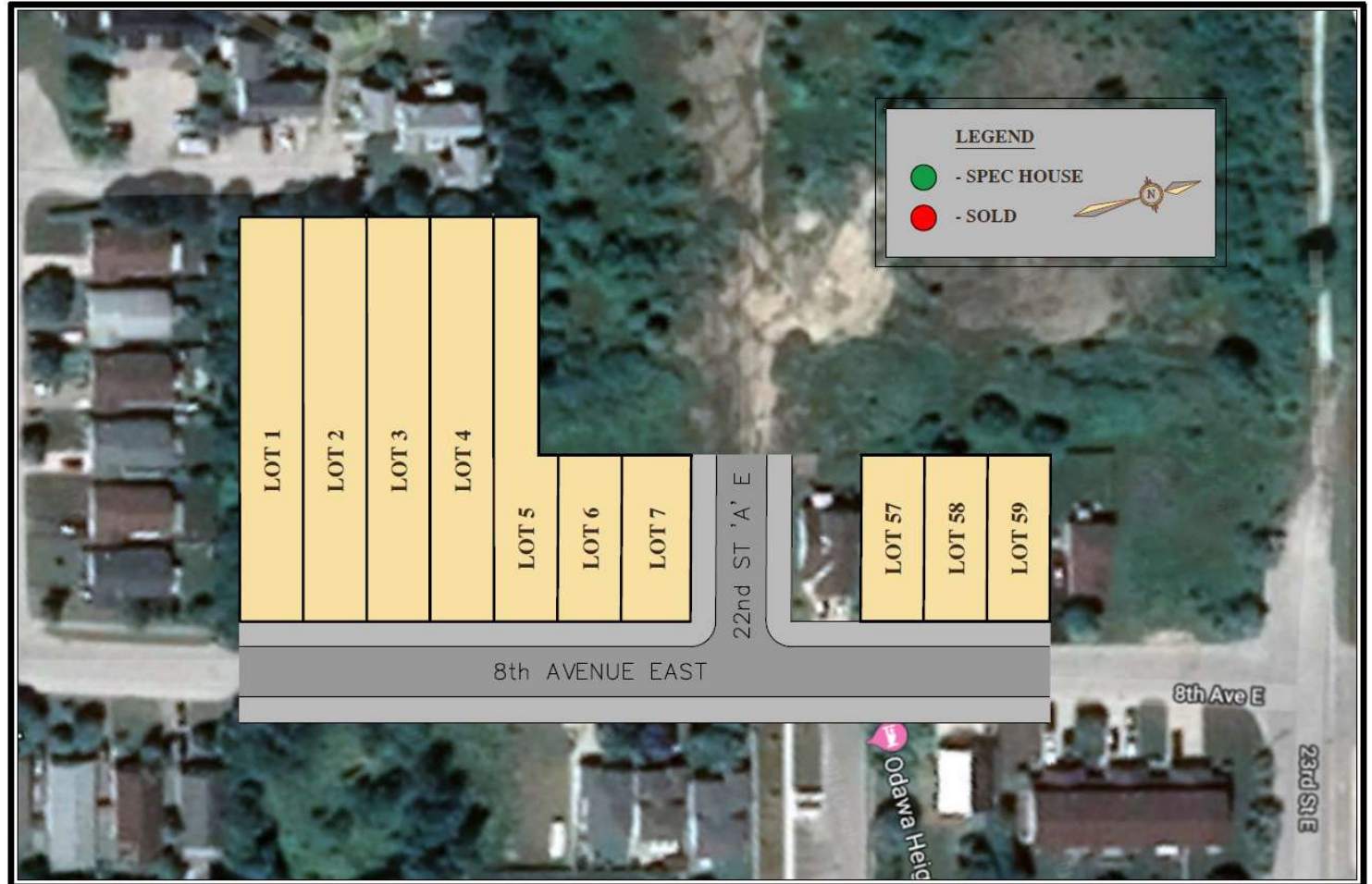
Lot 6: 41' x 108'

Lot 7: 45' x 108'

Lot 57: 41' x 108'

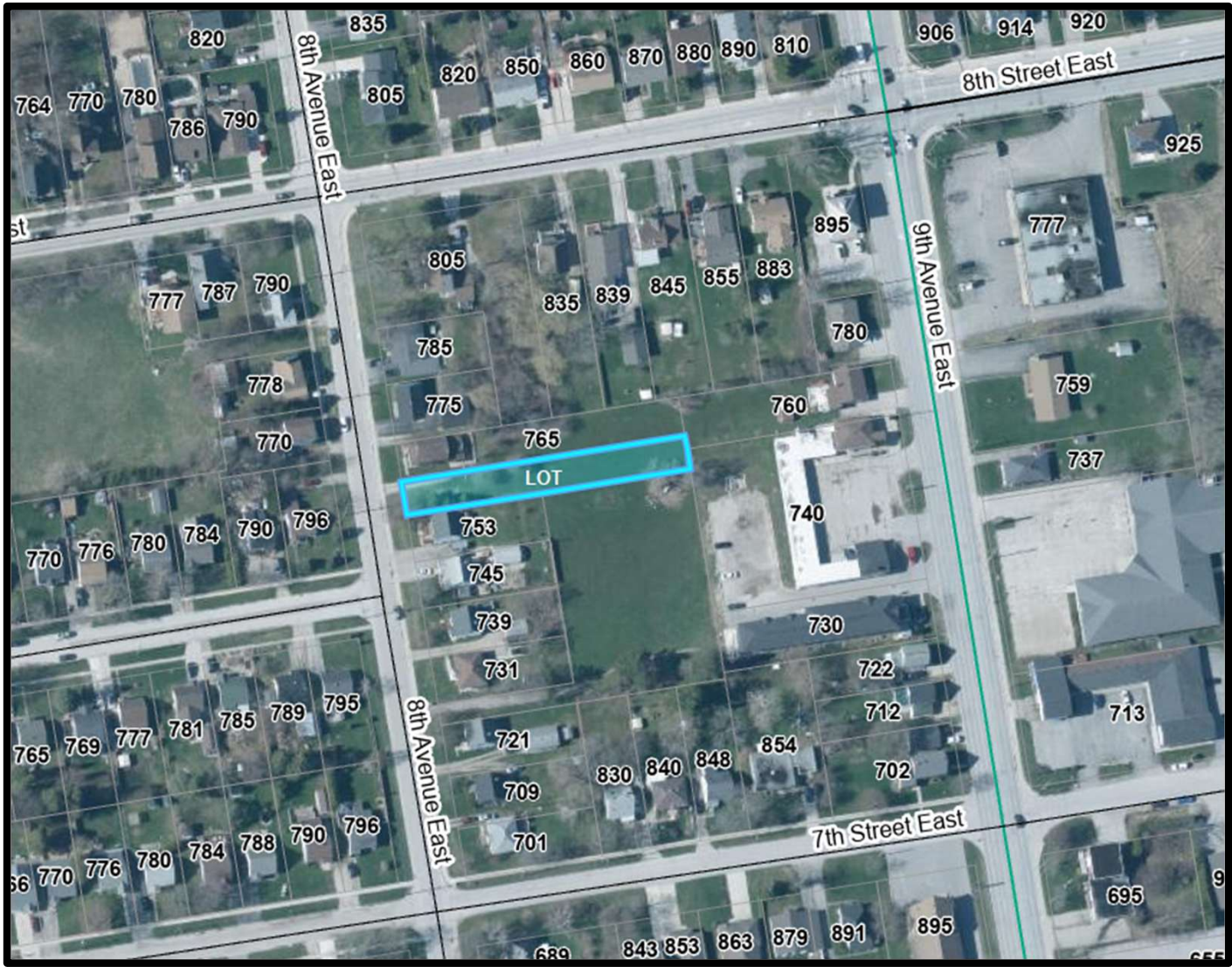
Lot 58: 41' x 108'

Lot 59: 41' x 108'



8th Avenue East

Lot: 33' x 280'



1718 6th Avenue East

Lot: 55' x 173'



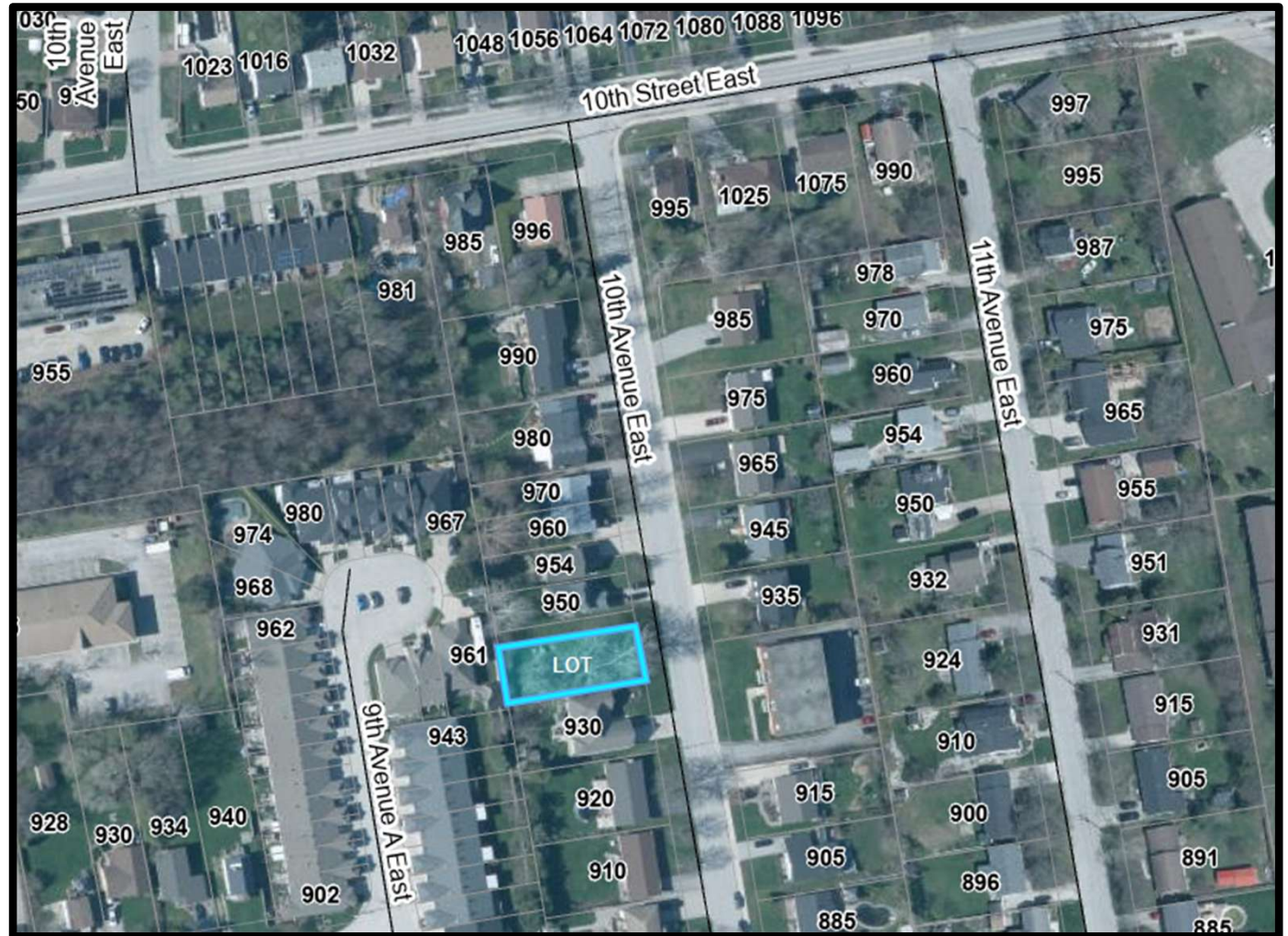
9th Avenue East

Lot 1: 65' x 127'



10th Avenue East

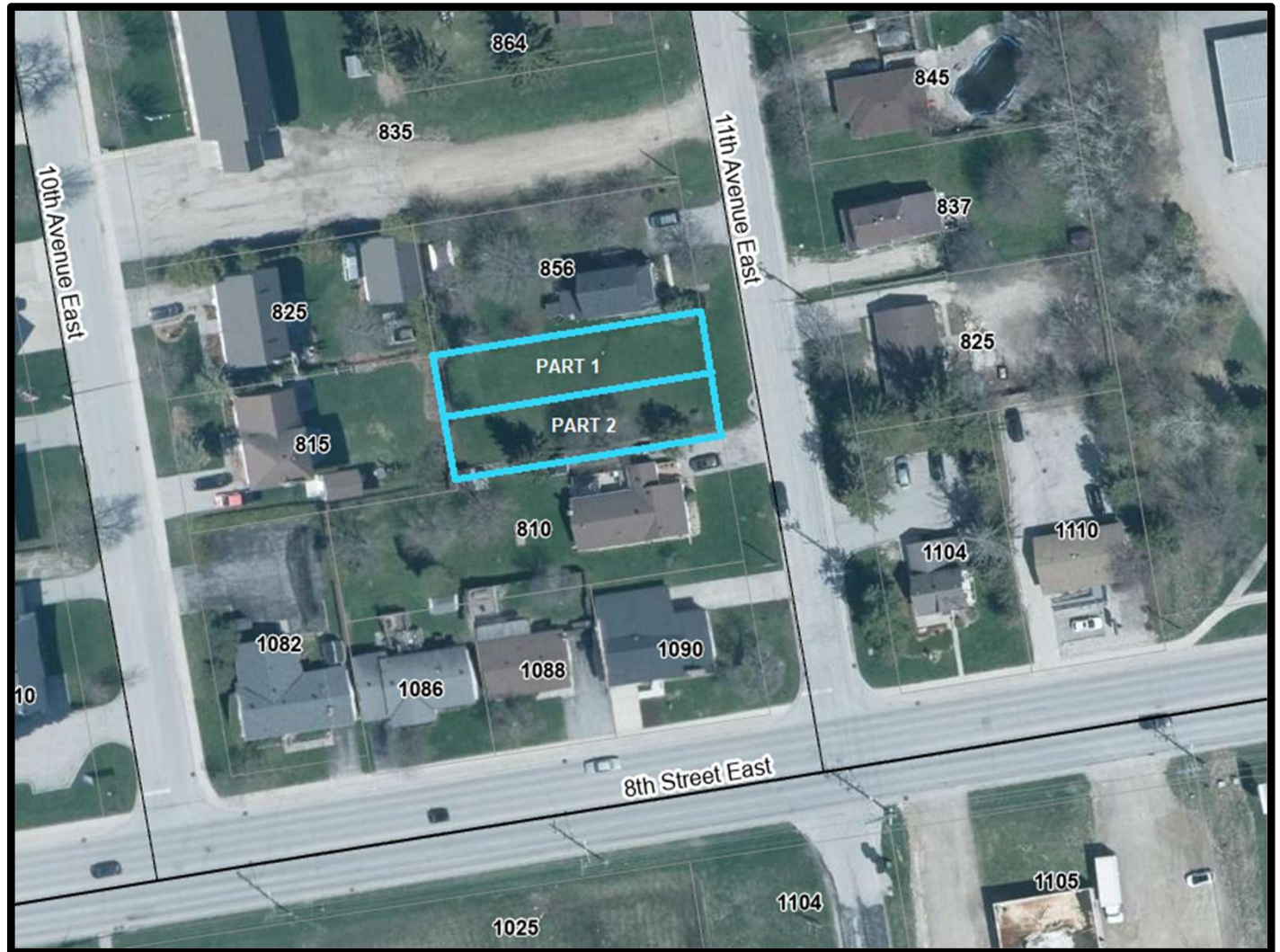
Lot 14: 54' x 132'



11th Avenue East – Semi Lots

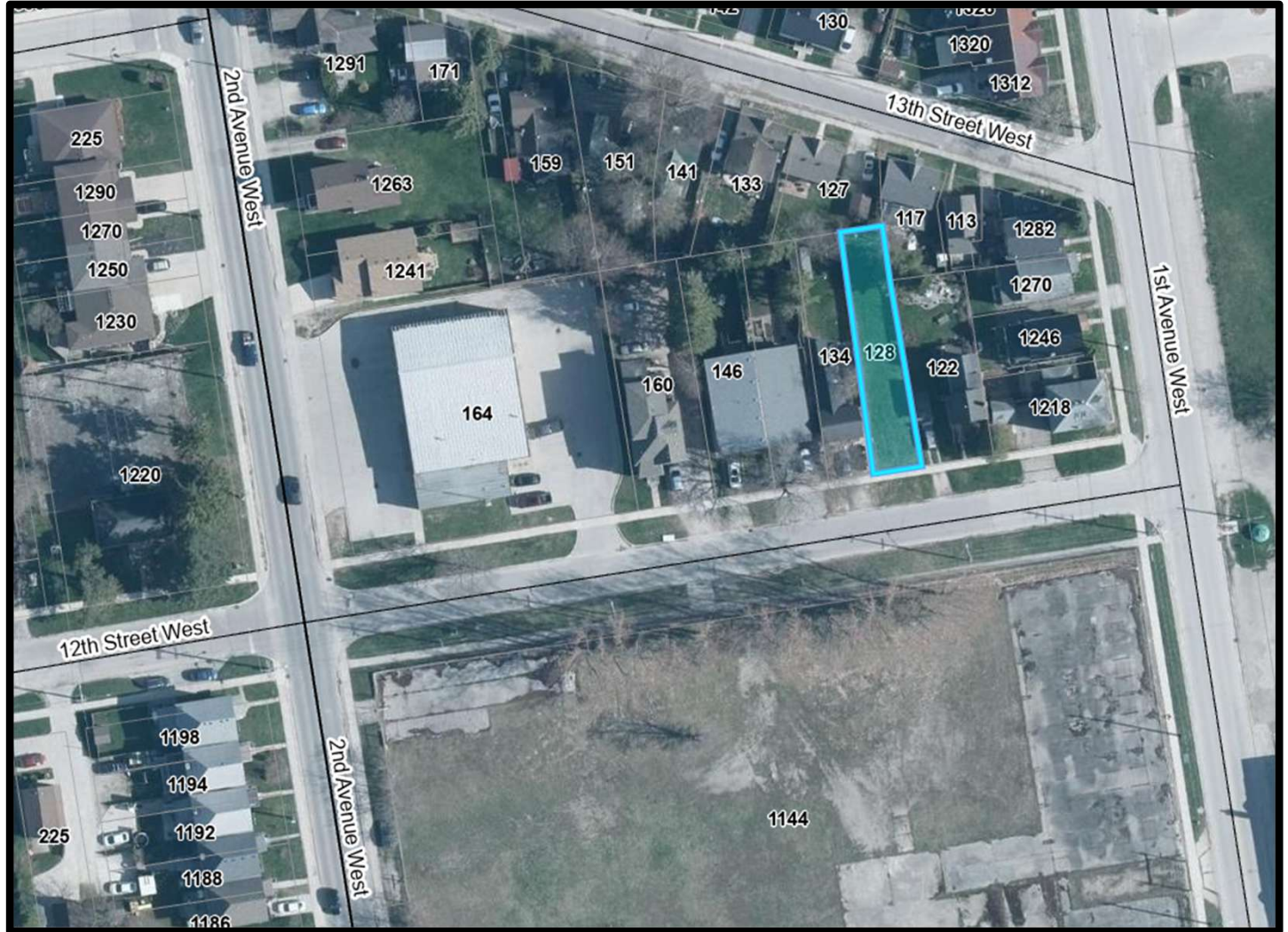
Part 1: 29' x 133'

Part 2: 29' x 133'



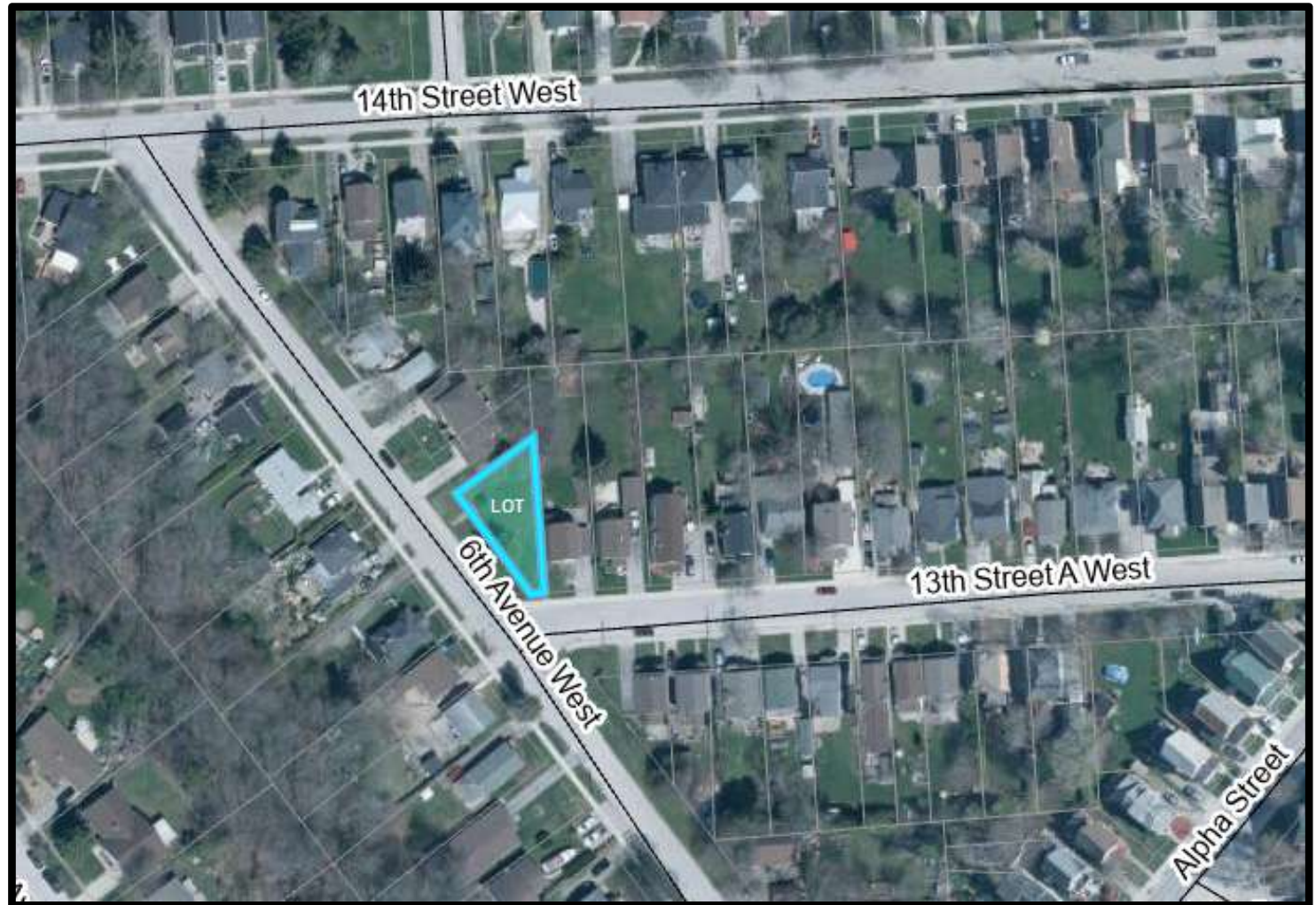
128 12th Street West

Lot: 26' x 133'



600 13th Street A West

Lot: 91' x 115'



15th Street East – Semi Lots

Part 1: 30' x 211'

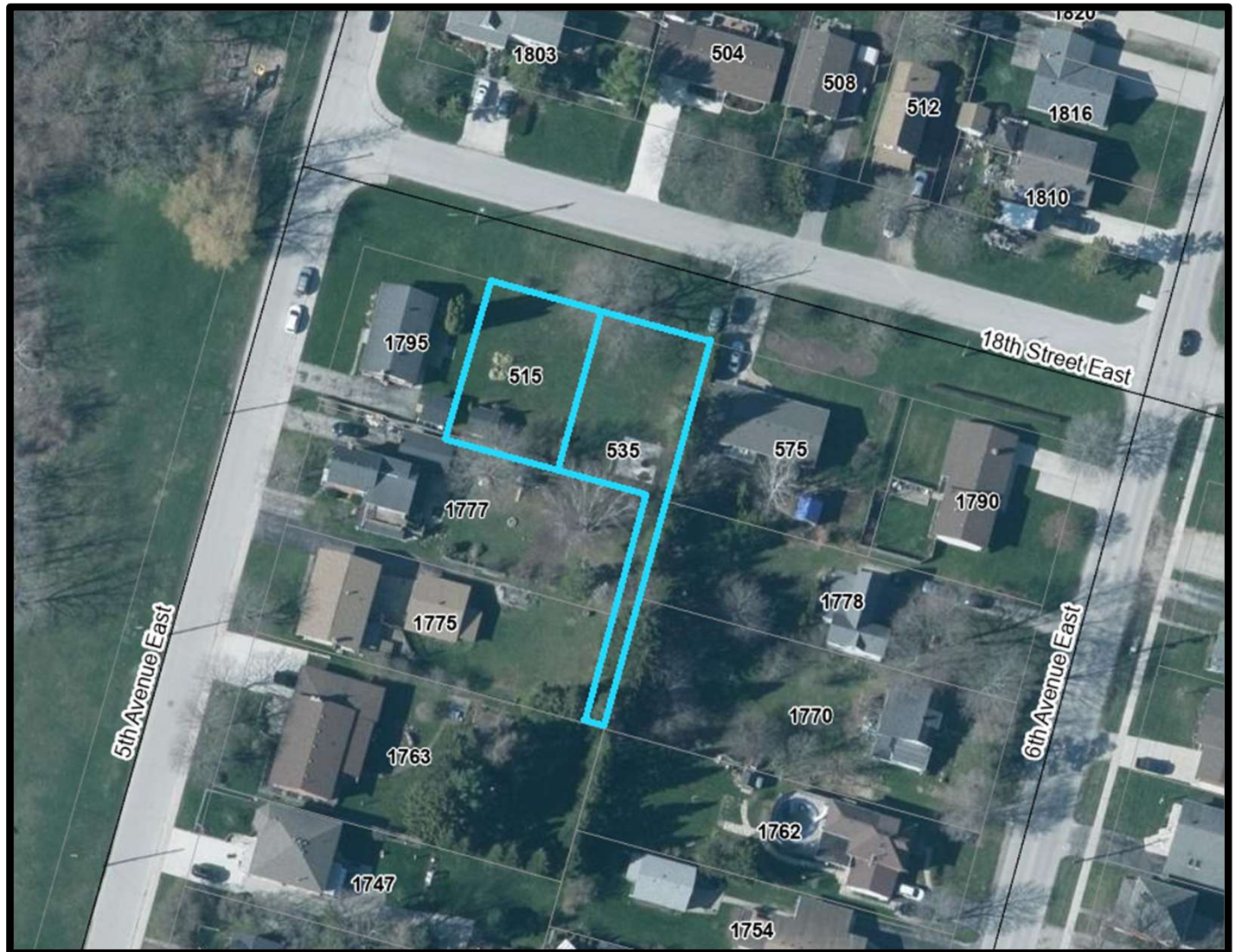
Part 2: 30' x 211'



18th Street East

515 18th St E:
60' x 84'

535 18th St E:
60' x 84'
+ 12' x 126'



9th Ave East – Semi Lots

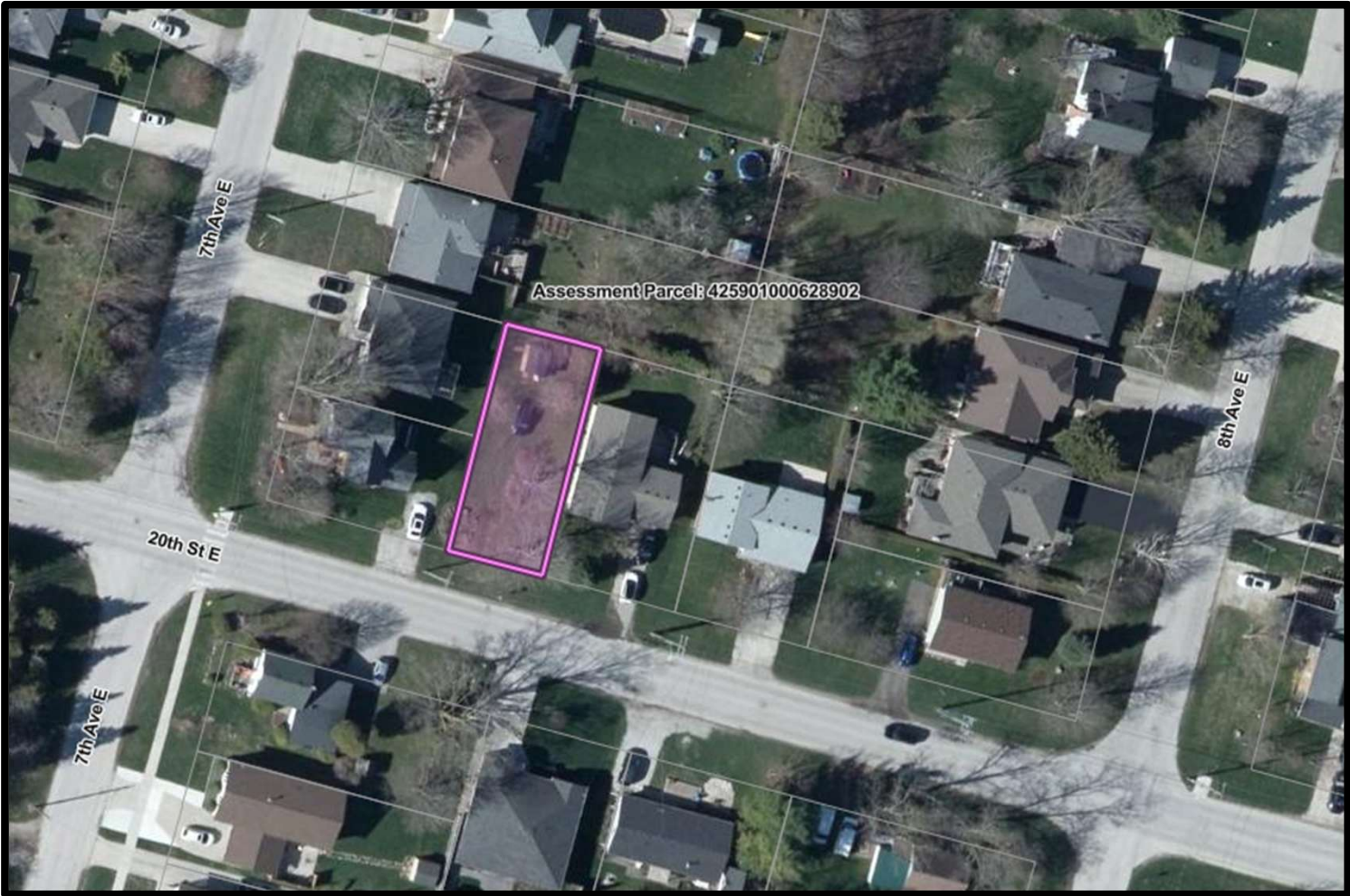
Part 2: 24' x 96'

Part 3: 24' x 96'



20th Street East

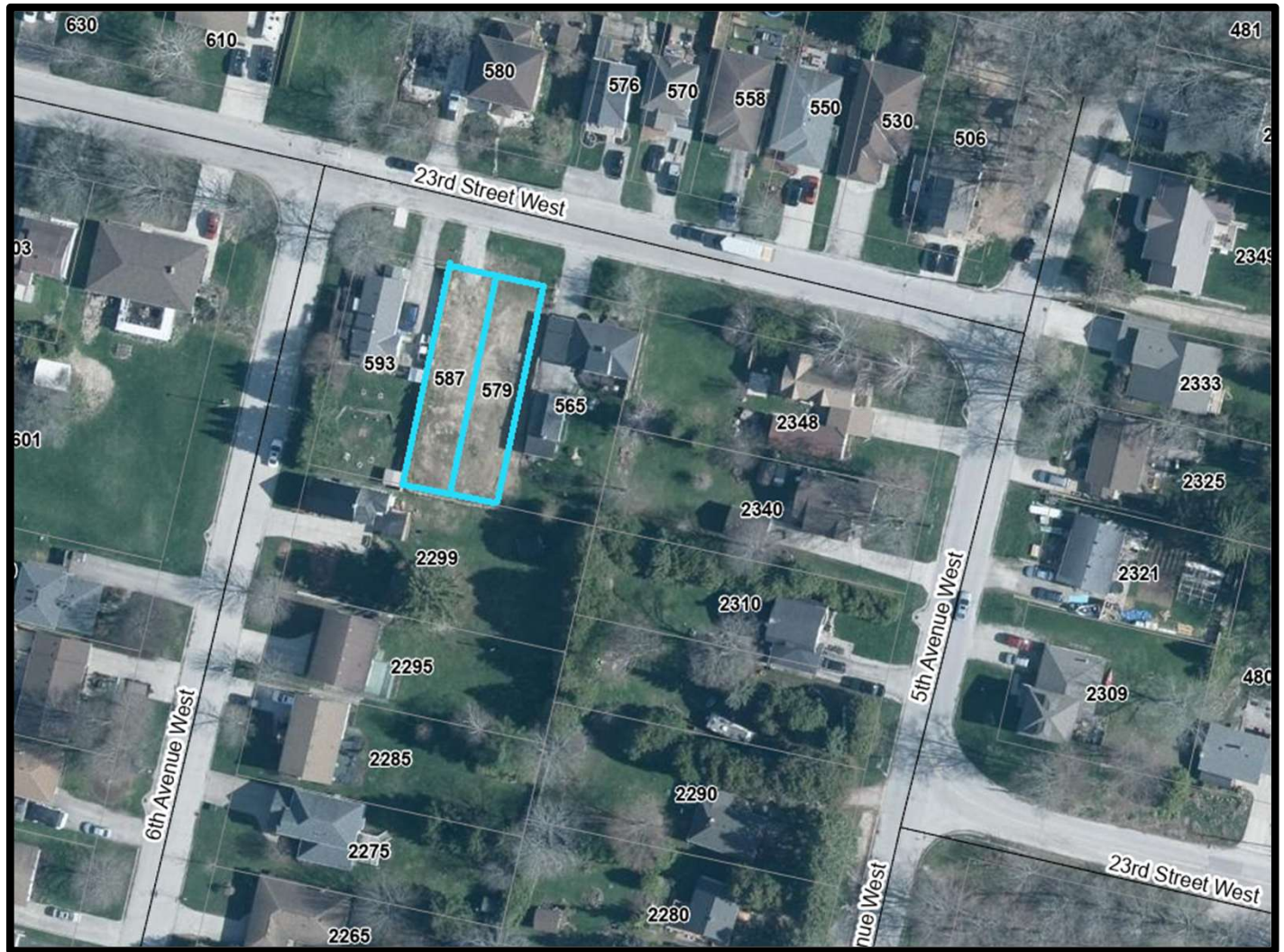
720 20th St. E:
44' x 106'



23th Street West – Semi Lots

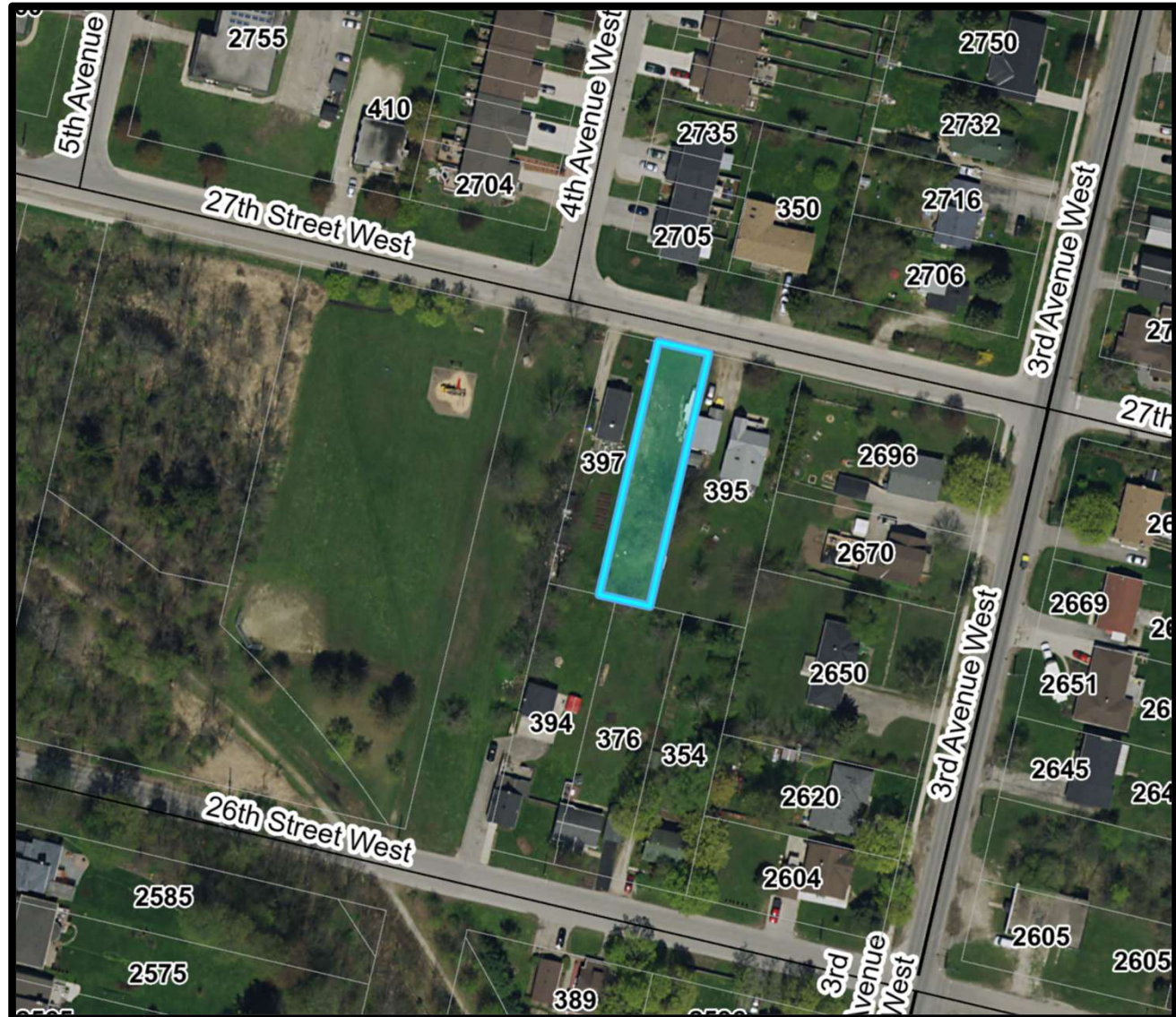
Part 1: 28' x 132'

Part 2: 28' x 132'



27th Street West

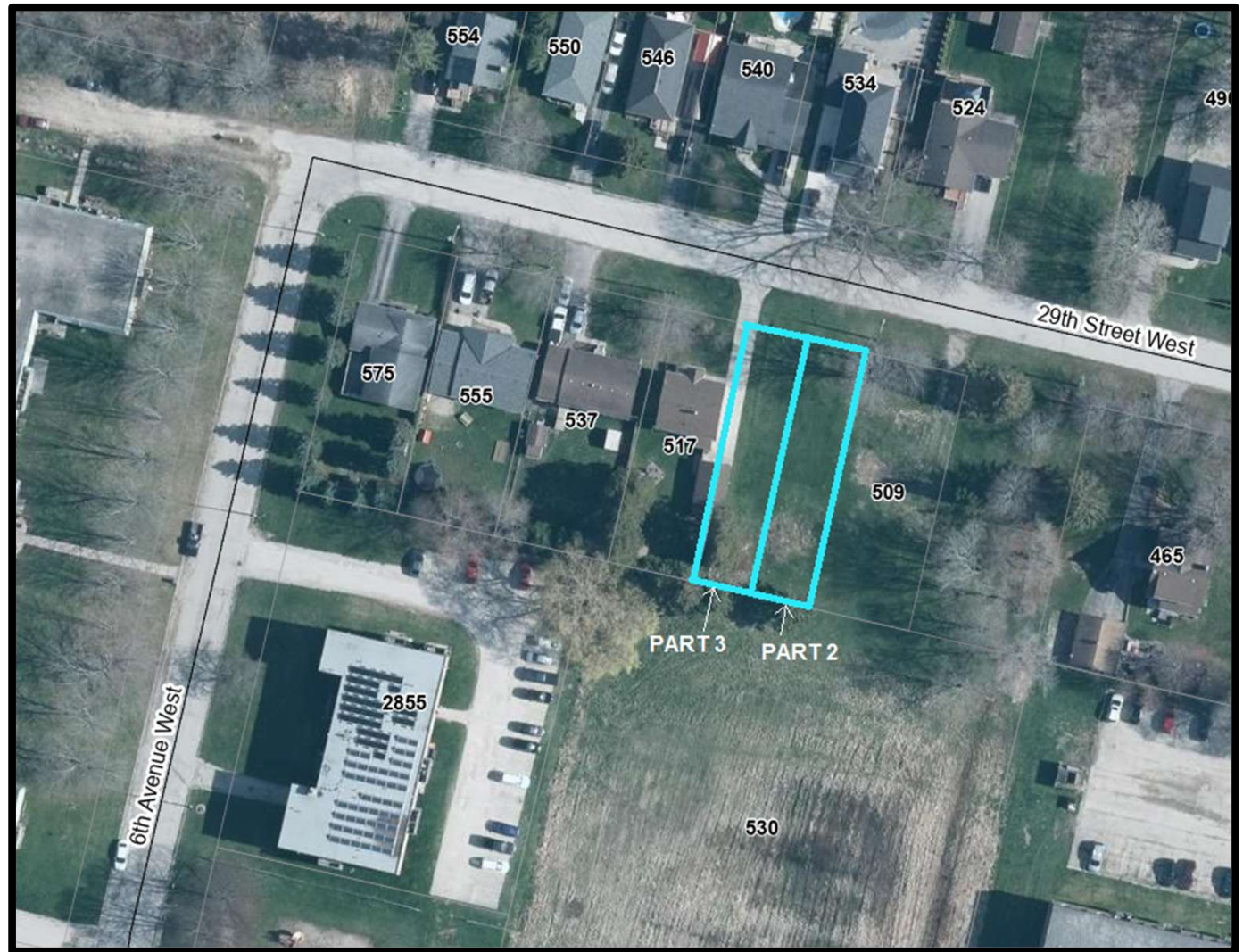
41.26' x 199.09'



29th Street West – Semi Lots

Part 2: 31' x 132'

Part 3: 31' x 132'



Woodland Estates

Lot 12: 52' x 118'

Lot 13: 55' x 111'

Lot 17: 67' x 101'

Lot 18: 62' x 101'

Lot 19: 58' x 107'

Lot 26: 71' x 99'

